



**EVOTECH**®  
P E R F O R M A N C E

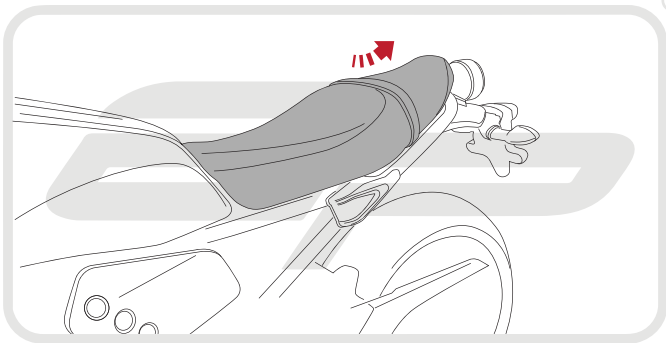
## Installation Instructions

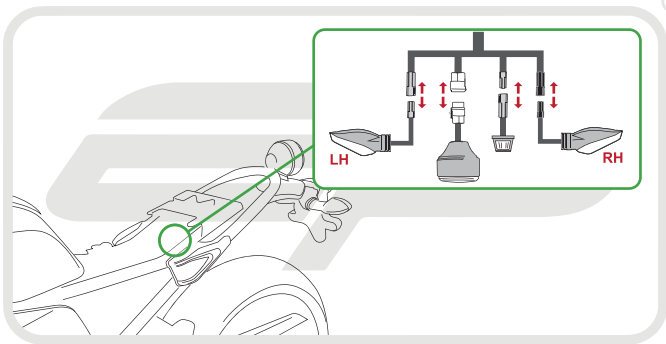
## YAMAHA XSR700 TAIL TIDY

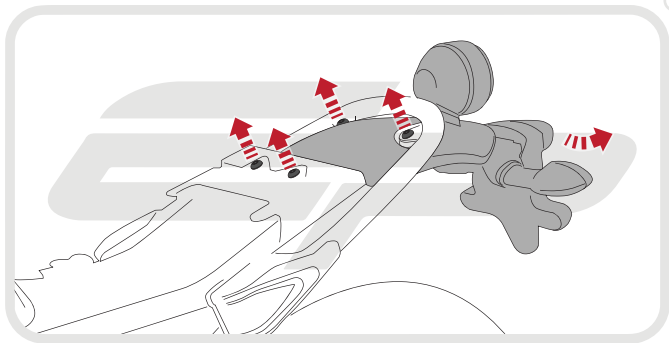
Product Reference - 13238

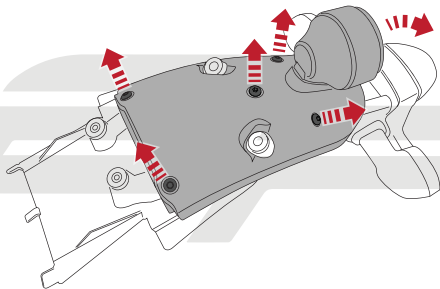
### Kit Contents

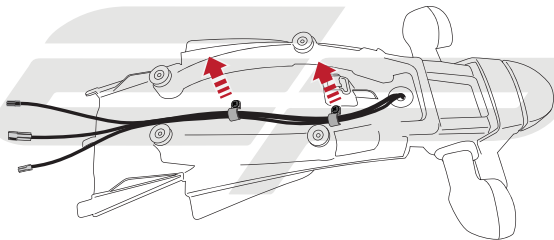
- |   |                                     |
|---|-------------------------------------|
| (A) 1 x Main Tail Tidy                      | (L) 2 x M6 - 16 Black Button Screws |
| (B) 1 x Indicator Bracket                   | (M) 2 x M6 Nyloc Nuts               |
| (C) 1 x Plastic Undertray                   | (N) 2 x M6 Black Washers            |
| (D) 1 x Reflector and Bracket               | (O) 2 x M5 Nyloc Nuts               |
| (E) 1 x LED Light Unit (with nuts attached) | (P) 2 x M4 Nyloc Nuts               |
| (F) 1 x Stainless Mounting Boss             | (Q) 2 x M4 Black Washers            |
| (G) 1 x Wiring Connector                    | (R) 2 x M6 - 25 Black Button Screws |
| (H) 1 x M5 - 16 Black Button Screw          | (S) 5 x Cable Ties                  |
| (I) 1 x M5 Black Washer                     | (T) 8 x M5 - 10 Black Button Screw  |
| (J) 2 x Plastic Spacers                     |                                     |
| (K) 2 x Plastic Nuts and Screws             |                                     |

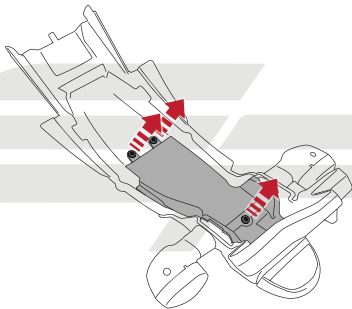




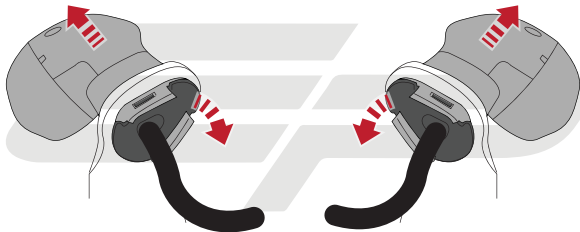






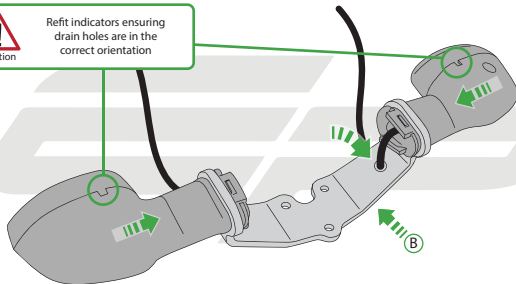


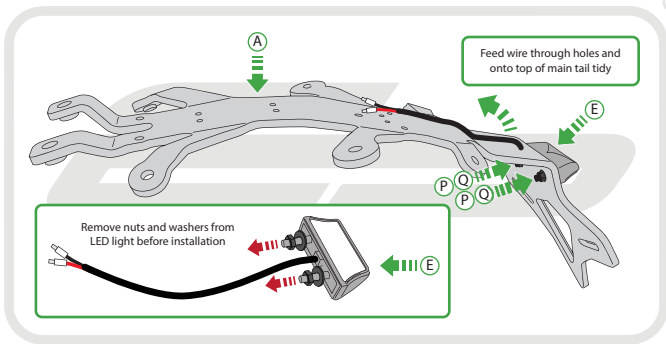






Refit indicators ensuring  
drain holes are in the  
correct orientation

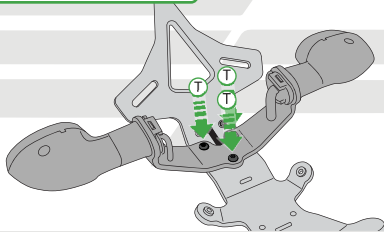






Caution

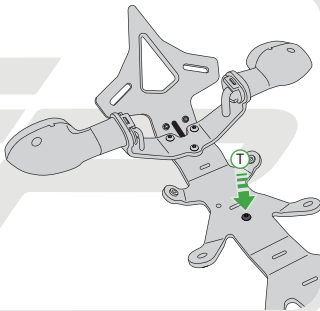
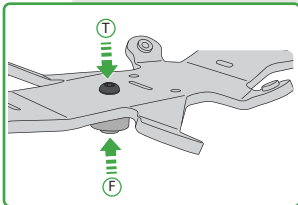
Follow this stage if bike has paniers fitted.  
If NOT running paniers please move  
on to the next stage





Caution

Follow this stage if bike has paniers fitted.  
If NOT running paniers please move  
on to the next stage





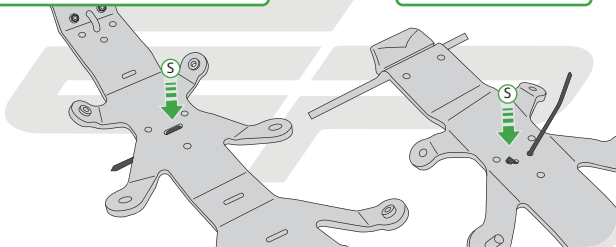
Caution

Follow this stage if NOT running paniers  
or wish indicators to be mounted  
further up underneath the seat



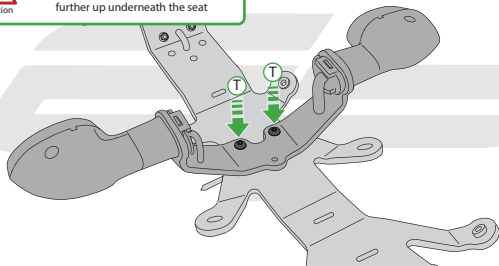
Caution

Leave cable tie open  
at this stage



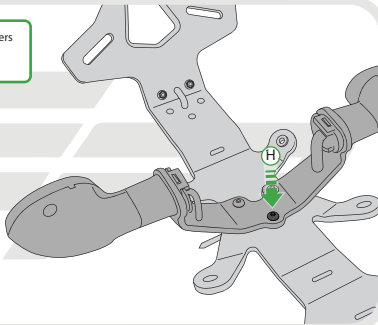
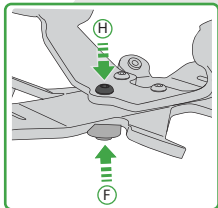


Follow this stage if NOT running panniers  
or wish indicators to be mounted  
further up underneath the seat

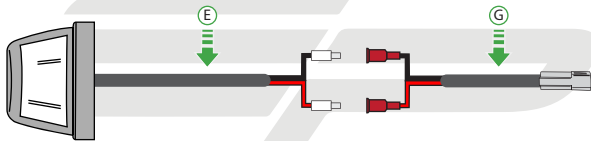


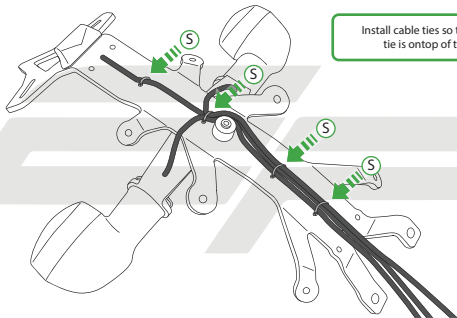


Follow this stage if NOT running paniers  
or wish indicators to be mounted  
further up underneath the seat

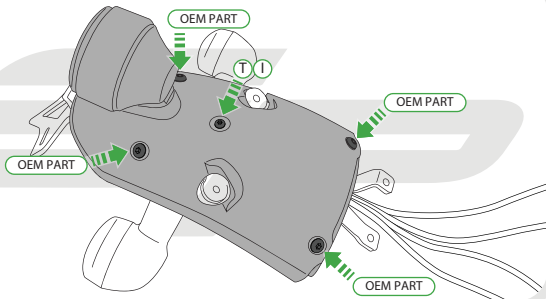


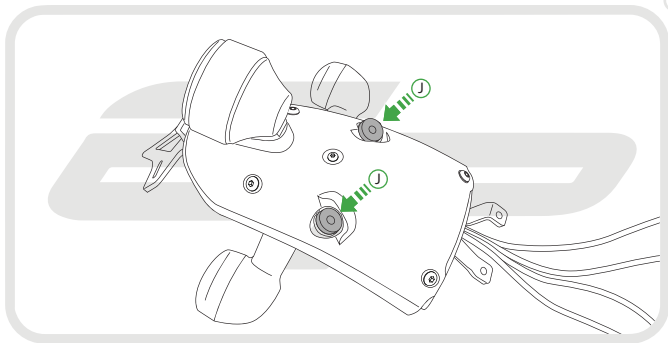




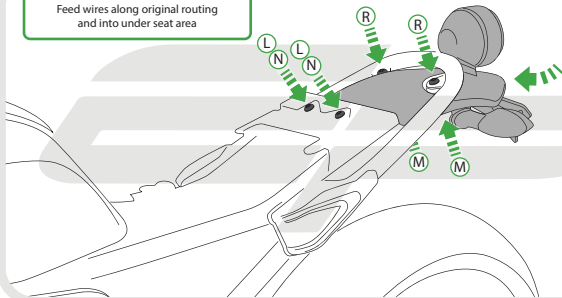


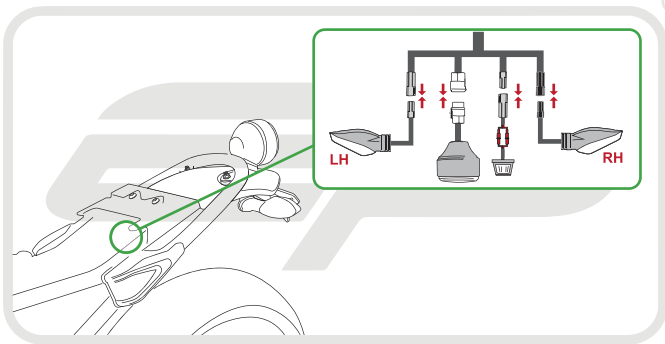
Install cable ties so the head of the tie is on top of the tail tidy

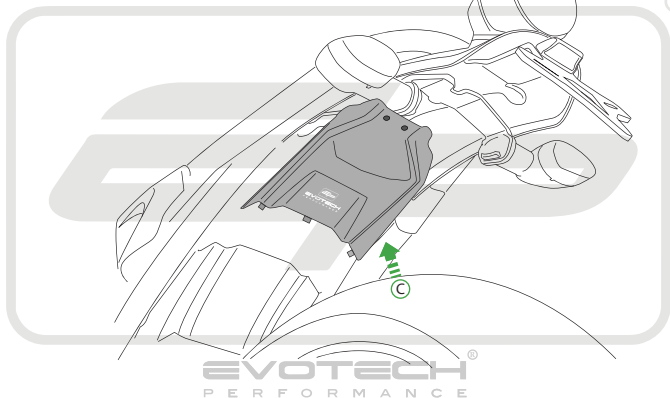




Feed wires along original routing  
and into under seat area

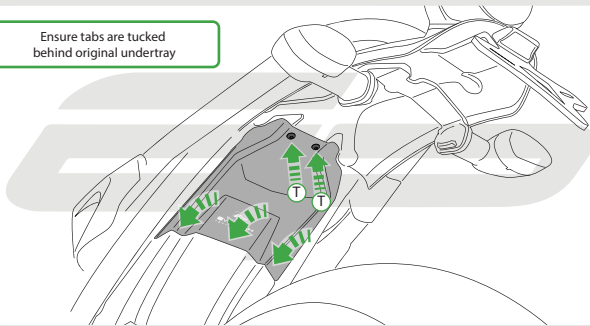




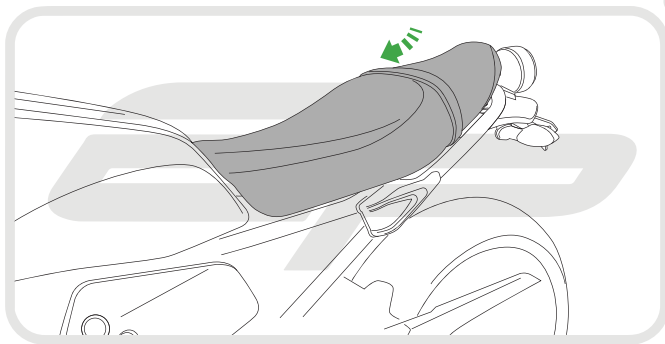


**EVOTECH**  
P E R F O R M A N C E

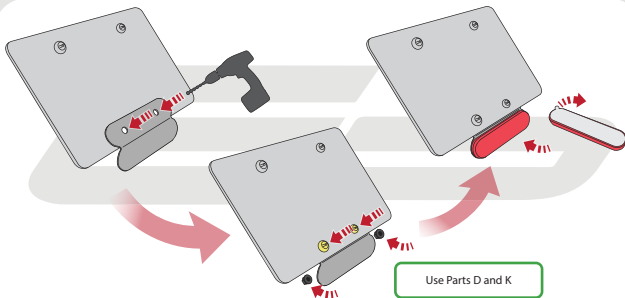
Ensure tabs are tucked  
behind original undertray

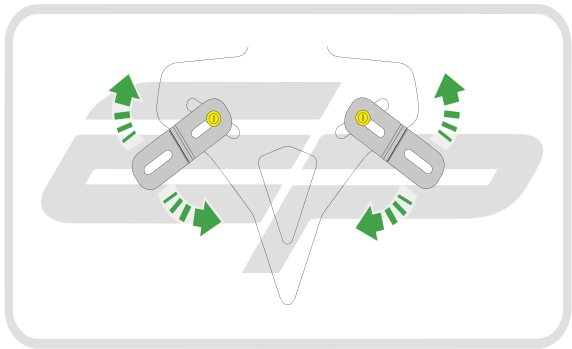






## Reflector Bracket Installation







### ESSENTIAL CHECKS



After installation of your tail tidy ensure that the licence plate does not contact the rear tyre when suspension is fully compressed.

Ensure all electrics including indicators, tail light, brake light and licence plate light lights are working correctly before riding the motorcycle.

It is recommended that periodic inspections are made to ensure that all fixings are fully tightend.



**EVOTECH**®  
P E R F O R M A N C E

[www.evotech-performance.com](http://www.evotech-performance.com)