

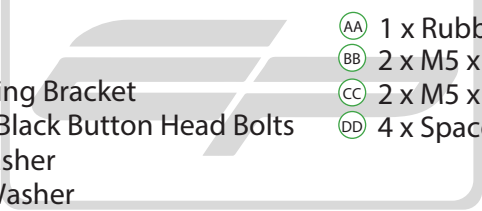


EVOTECH®
P E R F O R M A N C E

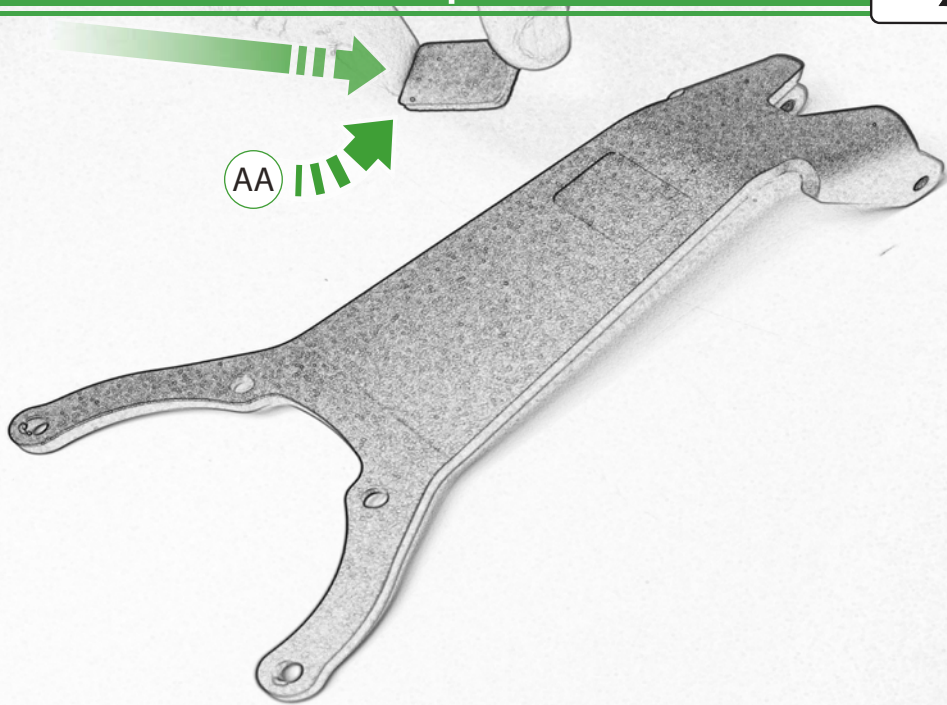
www.evotech-performance.com

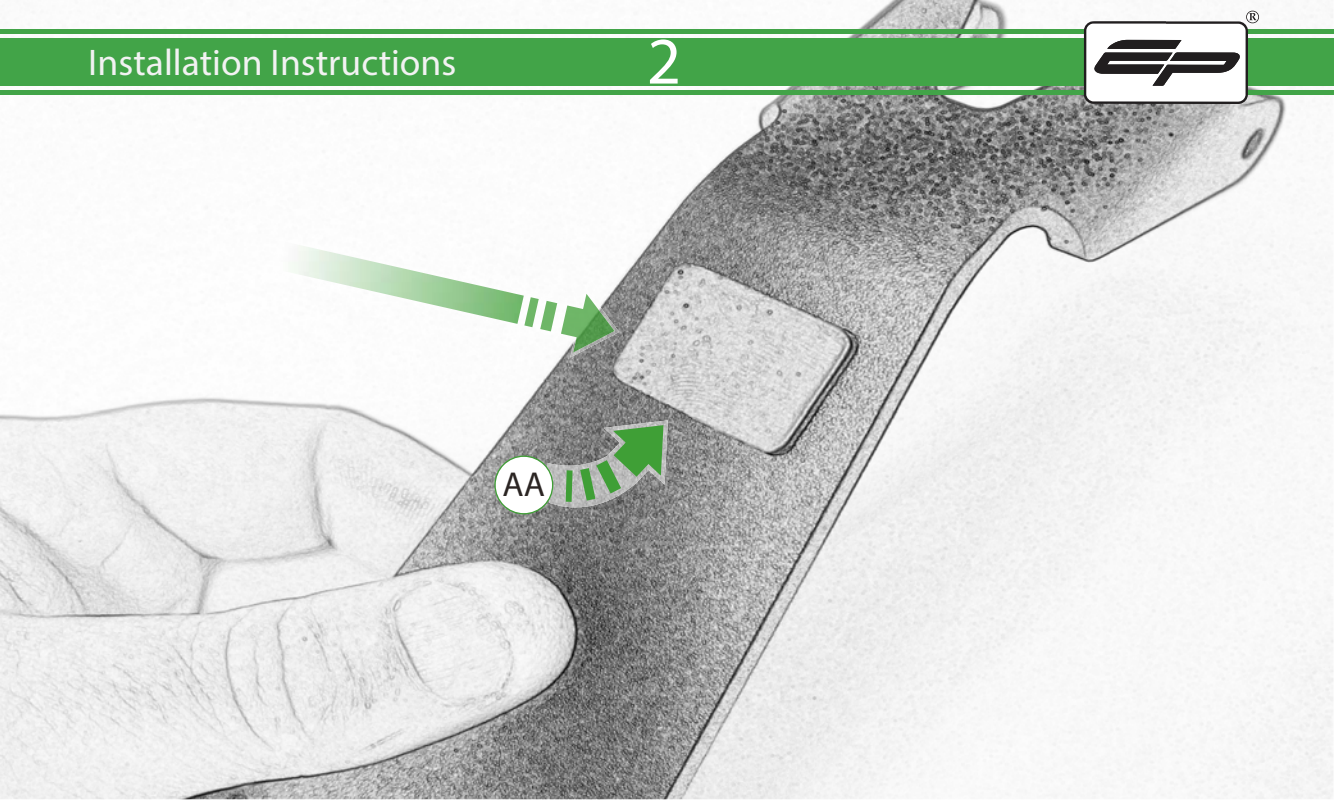
MV Agusta Brutale 800 Tom Tom Satnav Mount
Installation Instruction

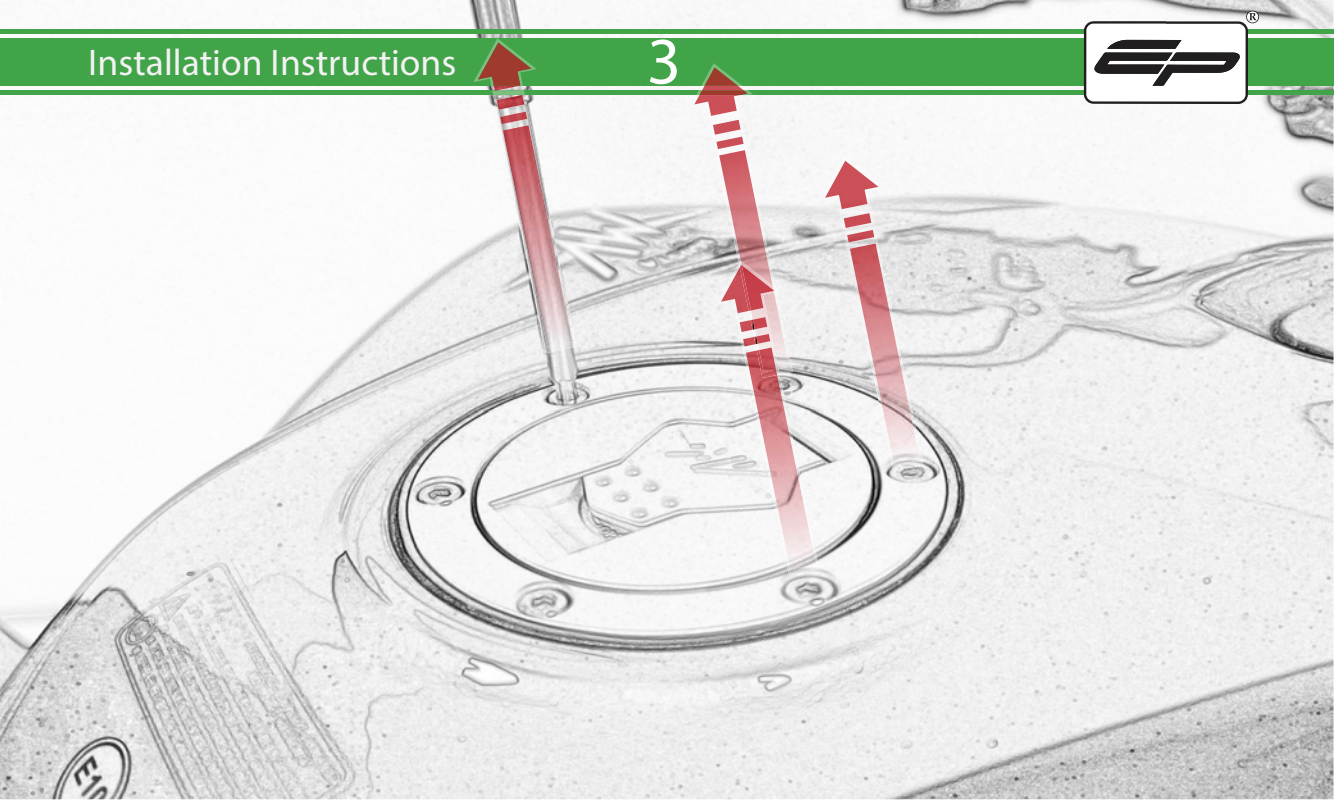


- 
- Ⓐ 1 x Main Plate
 - Ⓑ 1 x Pivot Plate
 - Ⓒ 1 x Sub Mounting Bracket
 - Ⓓ 2 x M5 x 8mm Black Button Head Bolts
 - Ⓔ 2 x Locking Washer
 - Ⓕ 2 x M5 Black Washer
 - Ⓖ 2 x M5 x 12 Caphead Bolt
 - Ⓗ 4 x M4 x 12mm Black Button Head Bolts
 - ⒶⒶ 1 x Rubber Pad
 - ⒷⒷ 2 x M5 x 45mm Black Button Head Bolts
 - ⒸⒸ 2 x M5 x 25mm Black Button Head Bolts
 - ⒹⒹ 4 x Spacers

EVOTECH[®]
P E R F O R M A N C E

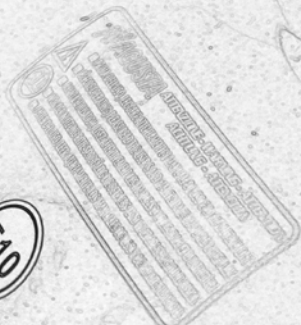


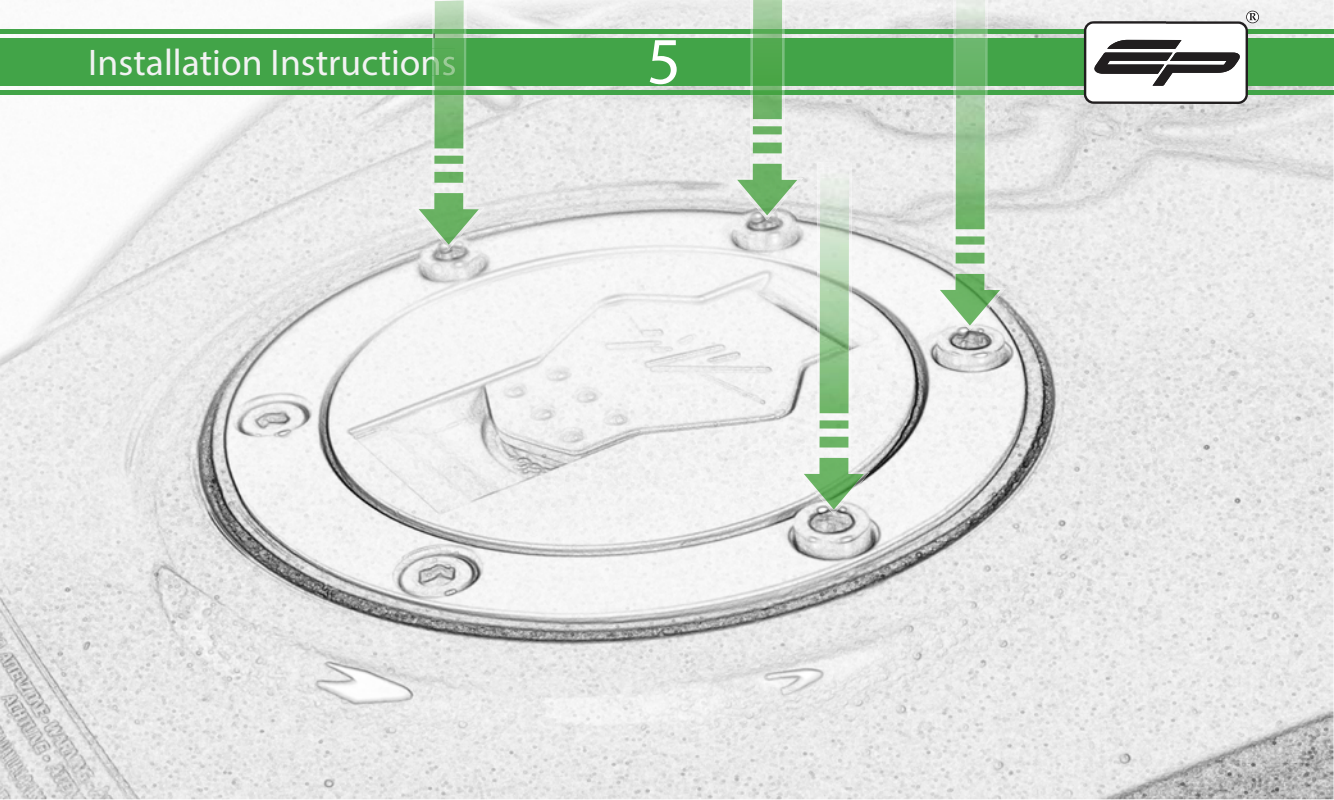




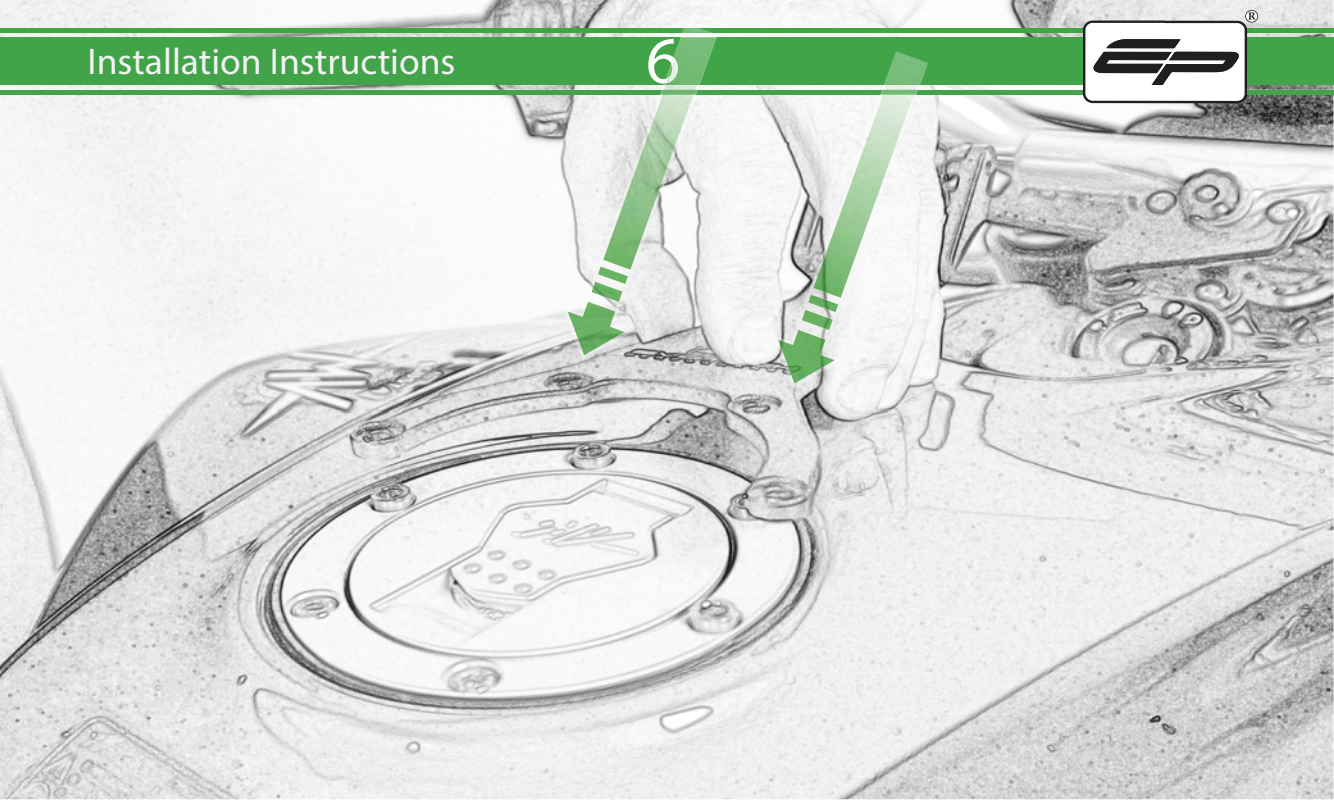


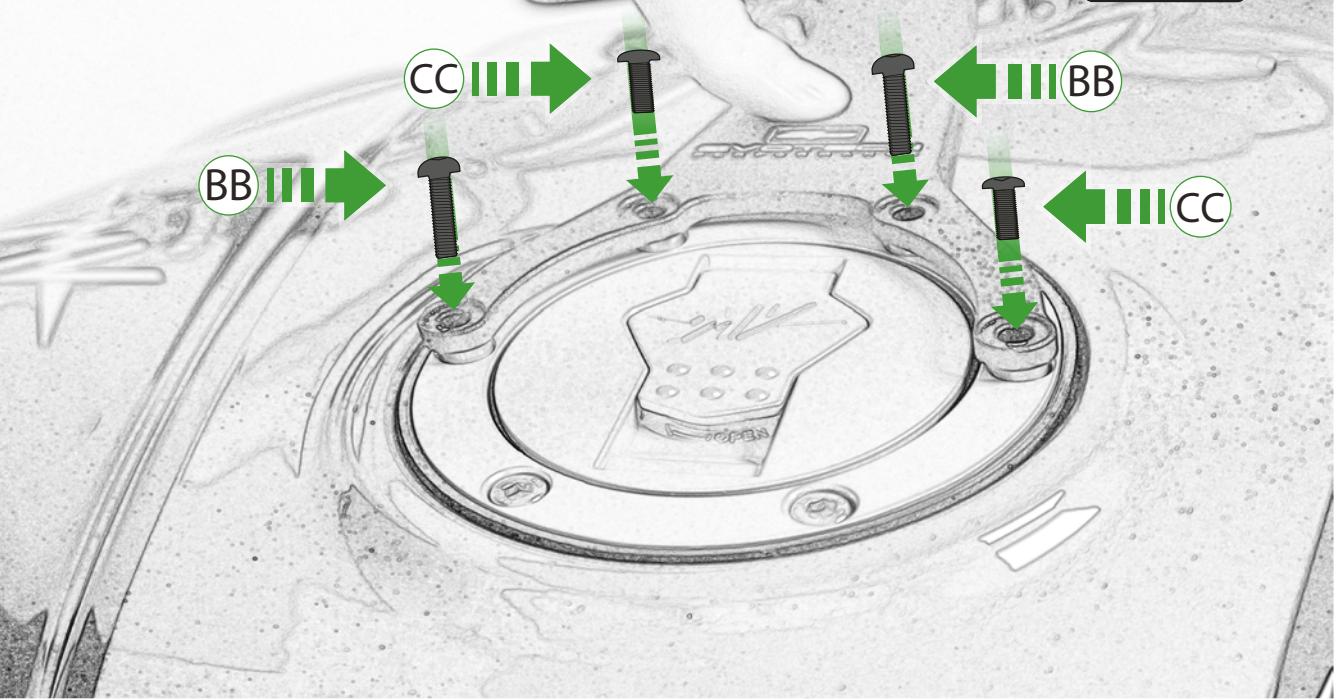
DD

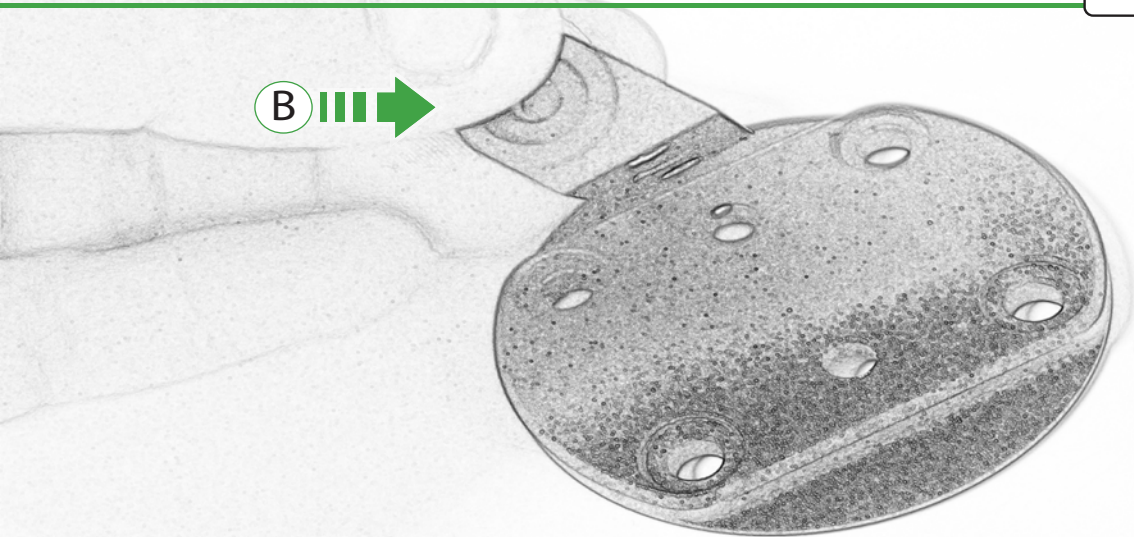


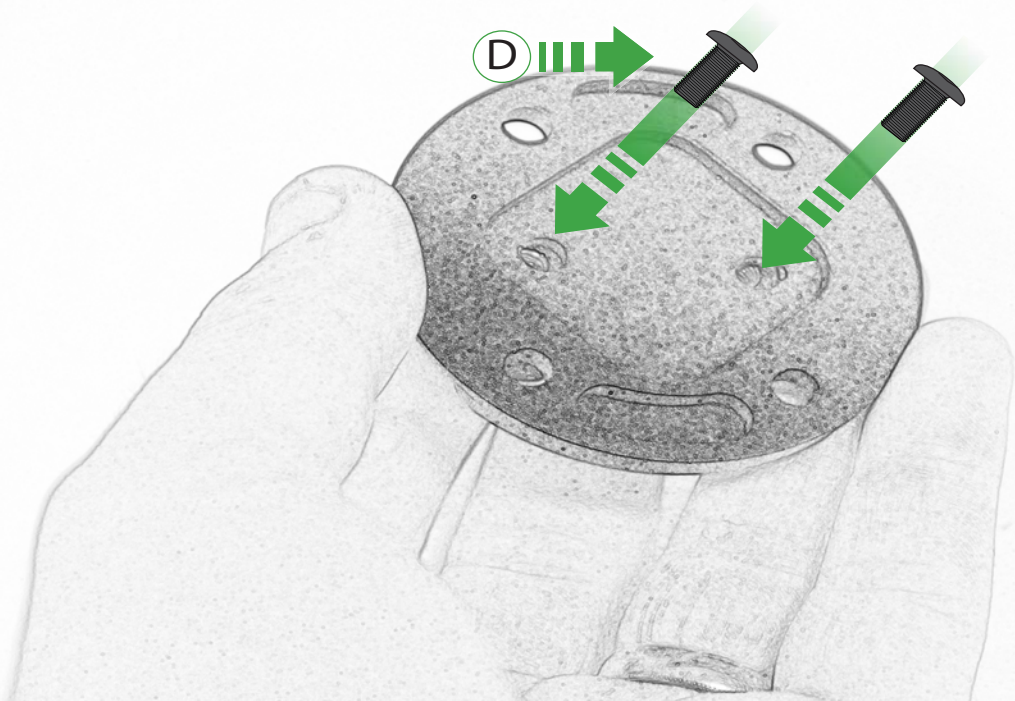


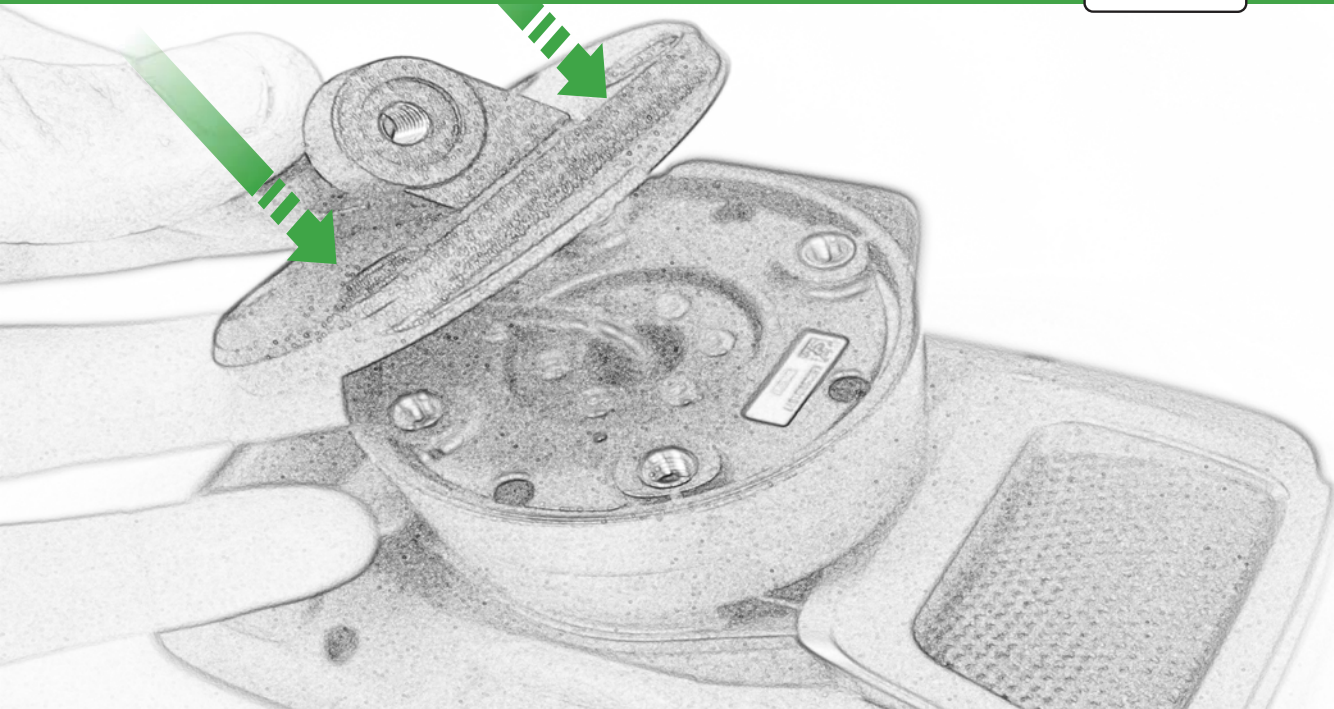
ANTHEM - MADE IN USA
ANTHEM - MADE IN USA
ANTHEM - MADE IN USA

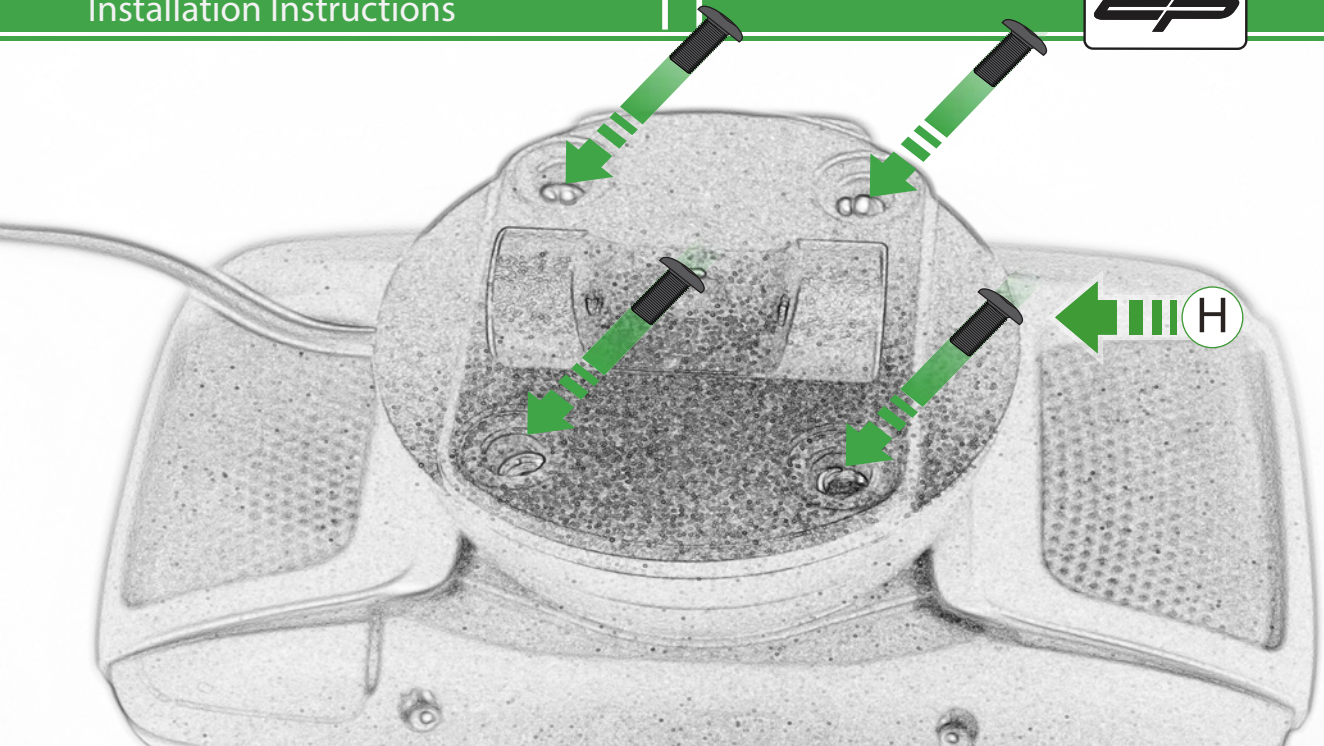


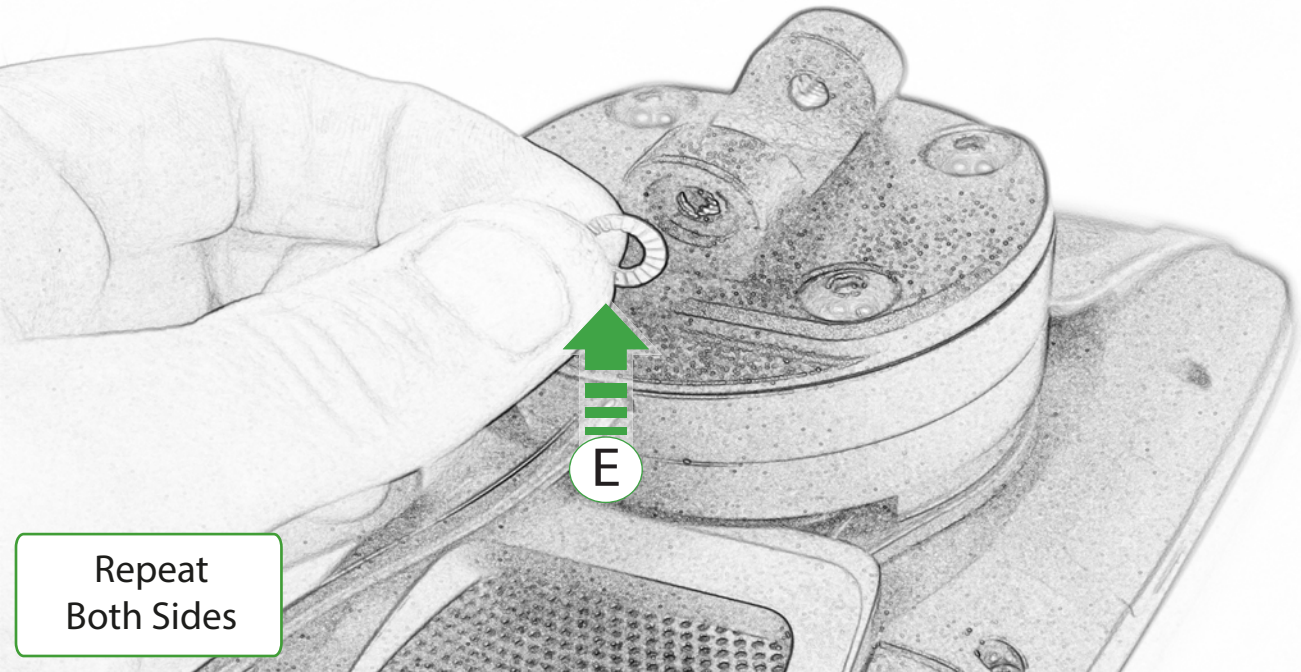




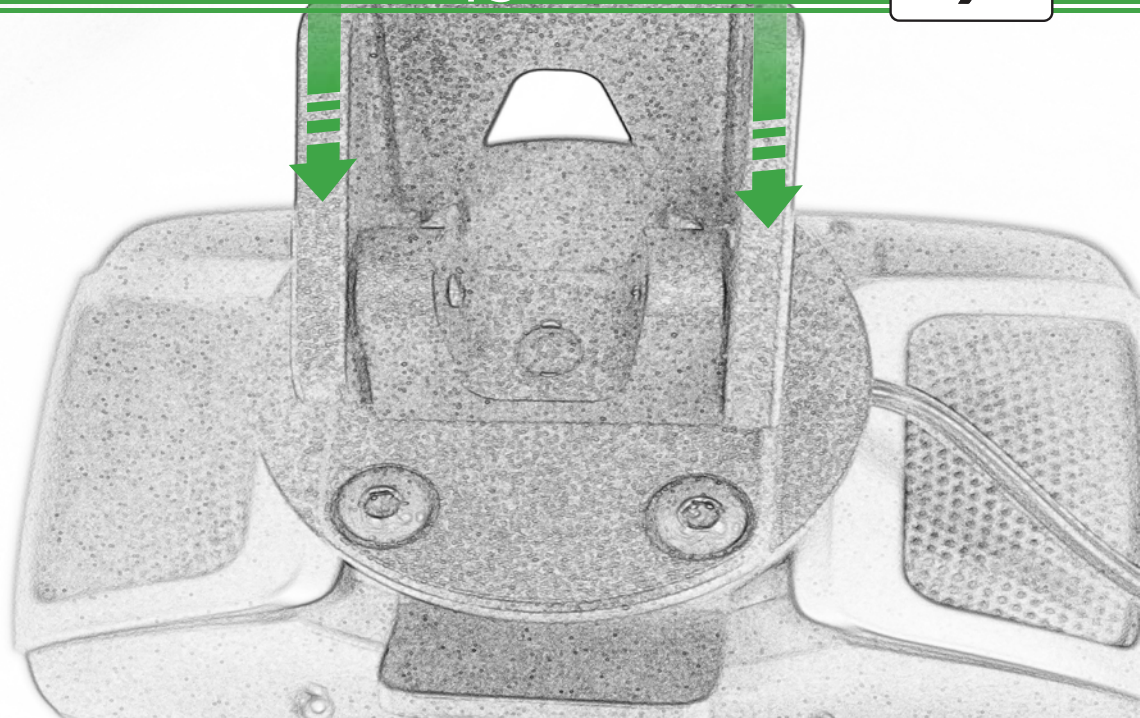


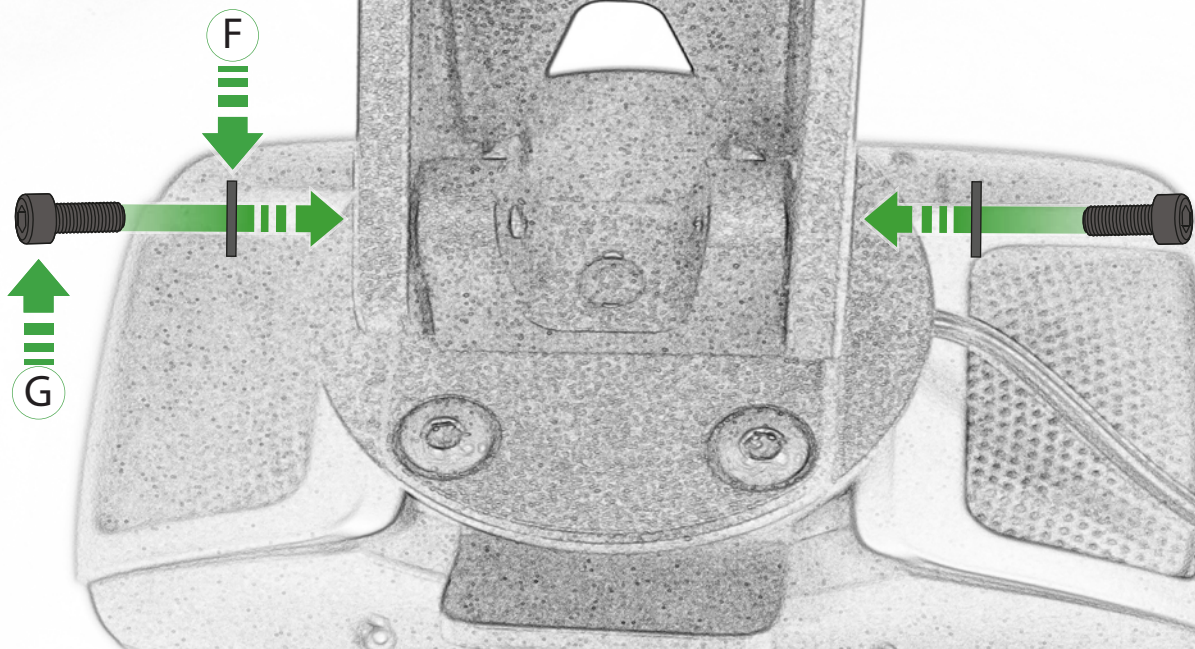






Repeat
Both Sides







 **ESSENTIAL CHECKS**  [®]

It is recommended that periodic inspections are made to ensure that all bolts are tightened to the specified torque settings.

Should the bike be involved in an accident a thorough inspection should be made and any components that have taken an impact, no matter how small, be replaced

P E R F O R M A N C E [®]



EVOTECH®
P E R F O R M A N C E

www.evotech-performance.com